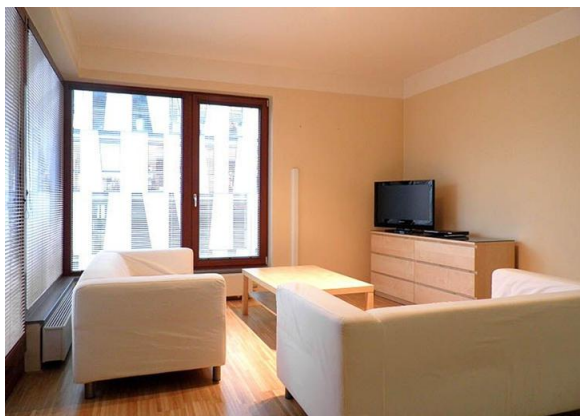


## INVOLUNTARY PUBLIC AUCTION

**Apartment 2+kk (2 rooms plus kitchenette) of area 68 m<sup>2</sup> on 4<sup>th</sup> floor in part B, complex RIVER DIAMOND in Prague 8**

**Subject matter of the auction is an apartment in a private and closed complex RIVER DIAMOND with 24-hour reception and security. It is a very nice, sunny and spacious apartment.**

The apartment has two rooms – living room with kitchenette and bedroom, balcony of area 4 m<sup>2</sup>, entrance hall, bathroom, and a separate toilet. The apartment is equipped with kitchen cabinets, including appliances (glass-ceramic stove with oven, fume-hood, dish washer, microwave oven, etc.), upholstered seating group and bedroom furniture. To the apartment belongs 1 parking place and a storage room (cellar). The interior of the apartment is designed by the architect Barbora Škorpilová. In the apartment, there are wooden mosaic floors of high quality, and in the bathroom is heated flooring and nice Venetian stucco. The double windows are soundproof, and the doors are security ones. For more information see [www.reximreality.cz](http://www.reximreality.cz).



**Time of the auction:**  
**Place of the auction:**

**29<sup>th</sup> February 2012 at 10.00 a.m.**  
**Na Vinici 882/31, Prague 10, meeting room**

**Lowest bid:**  
**Minimal bidding up:**  
**Auctionary security:**

**CZK 4,200,000**  
**CZK 30,000**  
**CZK 300,000**

**First viewing: 30<sup>th</sup> January at 10:00 a. m.**  
**Second viewing: 14<sup>th</sup> February at 10:00 a.m.**

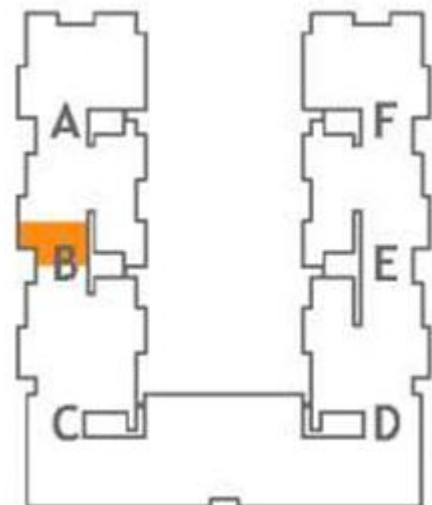
## The floor plan and orientation of the apartment

APARTMENT NUMBER: B 4.4



Gross area	71.2 m <sup>2</sup>
Net area	67.9 m <sup>2</sup>
Balcony / Terrace area	4 m <sup>2</sup>
Cellar area	2.6 m <sup>2</sup>

Rooms floor 1	
hall	4.4 m <sup>2</sup>
wc	3.1 m <sup>2</sup>
bathroom	4.1 m <sup>2</sup>
closet	1.9 m <sup>2</sup>
bedroom	13 m <sup>2</sup>
dressing room	2.8 m <sup>2</sup>
kitchen corner / kitchen	6.3 m <sup>2</sup>
living room	32.3 m <sup>2</sup>



## Location of the apartment in the building

---



## The building and near vicinity

---

### Building



Comfortable, luxurious and safe residence near the river, which fully fulfils the 21<sup>st</sup> century needs. RIVER DIAMOND – several modern trends in one. Living almost in the centre of the city, apartments with spacious terraces and balconies with view to the river or the city, interiors designed by prestigious residential architect. The author of the unique riverside residential palace RIVER DIAMOND is the reputable studio ŠAFER HÁJEK ARCHITEKTI, who managed to create in well accessible locality with adjacent pedestrian streets and the park a unique, lively, modern and pleasant town background. The building is divided into two wings perpendicular to the river, and one south wing along the street ROHANSKÉ NÁBŘEŽÍ. The building has been nominated into the final selection of the competition Building of the year 2007, and has been awarded the price BEST RESIDENTIAL DEVELOPMENT of the year 2007.

### Offer of services



Non-stop reception with security can arrange on request cleaning, delivery of mail, including larger parcels, and other services. Within the building you can find a private Japanese garden. From the services directly located in the building it is possible to use a wine shop, and number of cafés, restaurants, or stores with extended opening hours in walking distance from the complex. Hotel Hilton offers 24 hours every day traditional Czech cuisine. Parking for visitors in the garages of the building is free of charge.

### Transport availability



In the immediate vicinity of the building run tram lines, and is the METRO station of line B - KŘÍŽÍKOVA. The METRO station FLORENC (line B and C) can be reached in about 10 minutes of walk. All main highways are in only few minutes of car drive distance.

### Leisure activities



When there is nice weather, you can have a very pleasant walk on the waterfront along the river. The centre of the city is also easily accessible on foot. In near vicinity are tennis courts (I. ČLTK PRAHA), golf course (GOLF CLUB ČECHIE), playground for beach volleyball, and a bike path. In case of bad weather, there are fitness centres near the building. In Hilton hotel is two-storey HEALTH CLUB with fitness and relax centre offering also massages, a solarium, a swimming pool or a climbing wall.

## Location of the complex RIVER DIAMOND in Prague

Metro Křižíkova	1 min	
Metro Florenc	7 min	
Václavské náměstí	10 min	
Palace Cinema	10 min	
OC Palladium	7 min	
nemocnice	15 min	
restaurace	3 min	
potraviny (maloobchod)	1 min	

